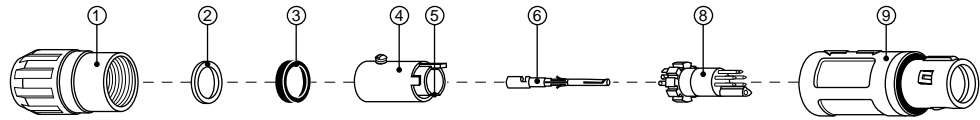
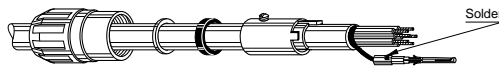


REDEL 3P — Solder LV Contacts

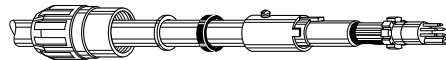


- Strip the cable according to the lengths given in the table. Tin the conductors. In case of a screened cable, separate the shield and twist it apart as shown.

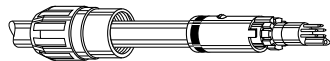
TYPE	Dimensions	
	L	T
306—310	13.0	3.0
314—318	13.0	3.0



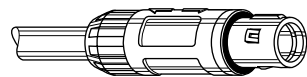
- Slide the retaining nut ①, the washer ②, the seal ③, and the clamping sleeve ④ onto the cable. In case of a screened cable, solder the shield into the grounding contact ⑥.



- In case of a screened cable, introduce the grounding contact ⑥ into the insert ⑧. Check that contact is correctly located and remains in position when given a gentle pull. Solder conductors into contacts, making sure that neither solder nor flux gets into the insulator or cable insulation.



- Slide the clamping sleeve ④ forward and locate tag ⑤ into the appropriate insulator slot ⑥ according to the selected polarization code. Make sure that the same code is used for plug and socket. Tighten the screw of the clamping sleeve ④ to secure the cable. Slide washer and seal against clamping sleeve.



- Push the whole assembly into the shell ⑨ while turning it to insure that the tag ⑤ is correctly located in the inside slot of the shell. Tighten the retaining nut ① to the maximum torque of 1.2 Nm.

—Socket mounting nut or screws torque = 2.3 Nm.

For PSU only:

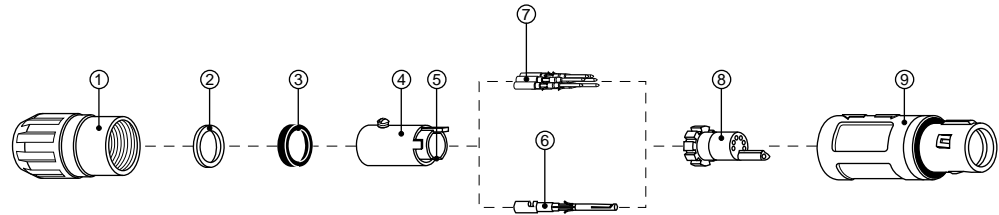
We recommend **ONLY** the use of VTCS-6 Clear Vibra-tite to secure the connector backnut. The use of other materials could result in damage to the connector. The only recommended chemical cleaner is Isopropyl Alcohol.

If you have any questions or require customer assistance, please contact us directly at (800) 444-5366.



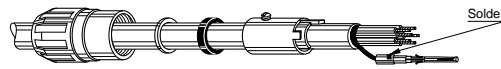
LEMO

REDEL 3P — Crimp LV Contacts

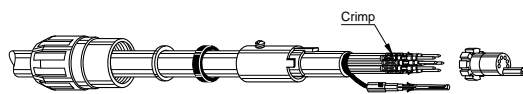


- Strip the cable according to the lengths given in the table. Tin the conductors. In case of a screened cable, separate the shield and twist it apart as shown.

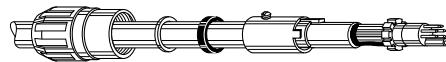
TYPE	Dimensions	
	L	T
306, 310, 314	19.0	5.4



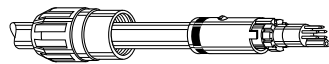
- Slide the retaining nut ①, the washer ②, the seal ③, and the clamping sleeve ④ onto the cable. In case of a screened cable, solder the shield into the grounding contact ⑥.



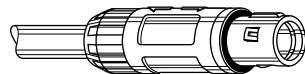
- Fix the appropriate positioner (male or female) in the crimping tool. Set selector to the number corresponding to the conductor AWG as indicated on the positioner label. Fit conductor into contact ⑦ and make sure it is visible through the inspection hole in the crimp barrel. Slide contact-conductor combination into the open crimping tool: make sure that the contact is fully pushed into the positioner. Close the tool. Remove from crimping tool and check that conductor is secure in contact and shows in inspection hole.



- Now arrange contact-conductor combinations according to the insert marking and locate them into the insert ⑤. In case of a screened cable, introduce the grounding contact ⑥ into the insert ⑤. Check that all contacts are correctly located and remain in position when given a gentle pull.



- Slide the clamping sleeve ④ forward and locate tag ⑤ into the appropriate insulator slot ⑥ according to the selected polarization code. Make sure that the same code is used for plug and socket. Tighten the screw of the clamping sleeve ④ to secure the cable. Slide washer and seal against clamping sleeve.



- Push the whole assembly into the shell ⑨ while turning it to insure that the tag ⑤ is correctly located in the inside slot of the shell. Tighten the retaining nut ① to the maximum torque of 1.2 Nm.
—Socket mounting nut or screws torque = 2.3 Nm.

For PSU only:

We recommend ONLY the use of VTCS-6 Clear Vibra-tite to secure the connector backnut. The use of other materials could result in damage to the connector. The only recommended chemical cleaner is Isopropyl Alcohol.

If you have any
questions or

require customer
assistance, please

contact us directly

at (800) 444-5366.

Polysulfone Chemical Recommendations

LEMO's, 1P, 2P and 3P series REDEL connectors are manufactured with Polysulfone. Use of any chemicals not compatible with Polysulfone may cause serious damage to connectors.

VTCS-6 Clear Vibra-tite

Application

- Place Vibra-Tite on the inside of the threads of the collet nut.
- Cover 2 or 3 threads on the area where they will be engaged when assembled.
- Wait a minimum of 30 minutes. Drying time will vary depending on the size of the part.
- Vibra-Tite must be dry before assembly.
- Vibra-Tite can be repeatedly moved or adjusted and will relock after such adjustments within 24 hours.

Safety Instructions

- Store in a cool place.
- Use adequate ventilation.
- Avoid prolonged or repeated breathing of fumes.
- Avoid contact with skin and eyes.
- Do not take internally. Call a physician if swallowed. DO NOT INDUCE VOMITING.
- In case of eye contact, flush thoroughly with water for at least 15 minutes and obtain medical attention.

Solder Recommendations

Recommended soldering materials are resin core solders such as Kester SN63PB37 flux "44" and non-corrosive solder flux such as GC Electronics, part # 10-4216.

Cleaning

The only recommended chemical cleaner is Isopropyl Alcohol.

The use of any other flux or cleaning agents may cause serious damage to the connectors.

If you have any questions or require customer assistance, please contact us directly at (800) 444-5366.

